

## DESCRIPTION

A versatile and modular line boring machine offering a choice of electric, hydraulic and pneumatic boring bar drive motors, with a mechanical drive for the feed assembly.

Choose a standard machine kit from pages 2 and 3, or configure your own machine to suit your requirements.

## KEY FEATURES

- Mechanical bi-directional variable auto-feed
- Drive and feed units which accept a variety of boring bar diameters
- Modular add-on components provide a flexible line boring solution for multiple projects
- Fast set-up time.

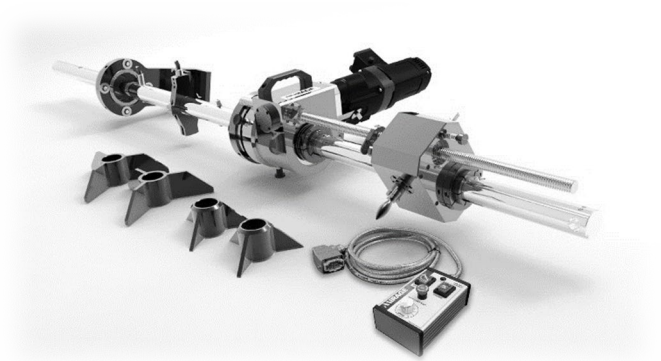
## PERFORMANCE AND SPECIFICATION

<b>BORING DIAMETER RANGE</b>	1.5" to 24"	
<b>BORING BAR STROKE</b>	305, 610 or 915mm	12, 24, or 36"
<b>POWER DRIVE MOTOR OPTIONS</b>		
Electric 110 / 220v (4 speed reversible)	2.5 KW	3.3 Hp
Pneumatic	1.7 KW	2.2 Hp
Pneumatic	3.0 KW	4.0 Hp
Hydraulic	3.7 KW	5.0 Hp
<b>VARIABLE TOOL FEED RATE</b>	0.02 – 0.25mm	0.001 – 0.010"
<b>MACHINE WEIGHT</b>		
Estimate based on 60mm x 2m boring bar and 2 single arm mounts, drive and feed.	186kg	409 lbs

**SHIPPING WEIGHTS AND DIMENSIONS:** Available on request and dependent upon components selected.

## Two ways to make the right choice

1. Choose one of our four standard machine packs and select the drive type needed.
1. Alternatively, build a machine to your own specification. See from page 4 - Configure your own line boring machine.



## STANDARD MACHINE PACKS

Choose from the example machine packs below. Please also ensure you choose the drive type.

### MLB610-A

#### 1.5 - 6" DIAMETER LINE BORING KIT COMPLETE WITH 30MM X 2M BORING BAR

ITEMS INCLUDED	QUANTITY
Metric Base Unit. Drive, Feed, Tool heads (1.5 - 6"), tool kit, manual and steel box	1
30mm Bar x 2000mm bar, 10mm tooling, 150mm Spacing	1
Electric 230V (8/160rpm) Motor Assembly	1
30mm Bar, Small Setup Cones (1.5 - 3.5")	1
30mm Bar, Medium Setup Cones (3.5 - 6")	1
60mm Boring Bar Single arm Mount (1 Piece)	2
30mm Collet Set. Feed, Drive, Tooling, Bearing x2	1
<b>IMPORTANT: CHOOSE YOUR DRIVE TYPE</b>	
Pneumatic	1
Electric	1
Hydraulic	1

### MLB610-B

#### 4 - 12" DIAMETER LINE BORING KIT COMPLETE WITH 60MM X 2M BORING BAR

ITEMS INCLUDED	QUANTITY
Metric Base Unit. Drive, Feed, Tool heads (4 - 12"), tool kit, manual and steel box	1
60mm x 2000mm bar, 12mm tooling holes, 250mm Spacing	1
305mm (12") Leadscrew	1
60mm Bar Small Setup Cones (2.75 - 8.37")	1
60mm Bar Medium Setup Cones (8.37 - 12")	1
60mm Boring Bar Single arm Mount (1 Piece)	2
Mounting Bearing Housing (Housing Only - No Bearing)	1
60mm Self Aligning Mounting Bearing (Bearing Only - No Housing)	1
<b>IMPORTANT: CHOOSE YOUR DRIVE TYPE</b>	
Pneumatic	1
Electric	1
Hydraulic	1

## STANDARD MACHINE PACKS (CONTINUED)

### MLB610-C

#### 4 - 24" DIAMETER LINE BORING KIT COMPLETE WITH 60MM X 2M BORING BAR

ITEMS INCLUDED	QUANTITY
Metric Base Unit. Drive, Feed, Tool heads (4 - 12"), tool kit, manual and steel box	1
60mm x 2000mm bar, 12mm tooling holes, 250mm Spacing	1
Electric 230V (8/160rpm) Motor Assembly	1
Electric 230V control box	1
610mm (24") Leadscrew	1
60mm Bar Small Setup Cones (2.75 - 8.37")	1
60mm Bar Medium Setup Cones (8.37 - 12")	1
60mm Boring Bar Single arm Mount (1 Piece)	2
Mounting Bearing Housing (Housing Only - No Bearing)	1
60mm Self Aligning Mounting Bearing (Bearing Only - No Housing)	1
60mm Bar, 12" - 24" Bore Kit - 12mm Square Tooling	1
2 1/4" Bar Large Setup Cones (12 - 24")	1
<b>CHOOSE DRIVE TYPE</b>	
Pneumatic	1
Electric	1
Hydraulic	1

### MLB610-D

#### 1.5 - 12" DIAMETER LINE BORING KIT COMPLETE WITH 30MM & 60MM X 2M BORING BARS

ITEMS INCLUDED	QUANTITY
Metric Base Unit. Drive, Feed, Tool heads (4 - 12"), tool kit, manual and steel box	1
60mm x 2000mm bar, 12mm tooling holes, 250mm Spacing	1
610mm (24") Leadscrew	1
60mm Bar Small Setup Cones (2.75 - 8.37")	1
60mm Bar Medium Setup Cones (8.37 - 12")	1
60mm Boring Bar Single arm Mount (1 Piece)	2
30mm Bar x 2000mm bar, 10mm tooling, 150mm Spacing	1
30mm Bar, Full Set of Setup Cones (1.5"- 6")	1
30mm Collet Set. Feed, Drive, Tooling, Bearing x2	1
<b>IMPORTANT: CHOOSE YOUR DRIVE TYPE</b>	
Pneumatic	1
Electric	1
Hydraulic	1

### MLB610-E

#### 1.5 - 24" DIAMETER LINE BORING KIT COMPLETE WITH 30MM & 60MM X 2M BORING BARS

ITEMS INCLUDED	QUANTITY
Metric Base Unit. Drive, Feed, Tool heads (4 - 12"), tool kit, manual and steel box	1
60mm x 2000mm bar, 12mm tooling holes, 250mm Spacing	1
610mm (24") Leadscrew	1
60mm Boring Bar Single arm Mount (1 Piece)	2
Mounting Bearing Housing (Housing Only - No Bearing)	1
60mm Self Aligning Mounting Bearing (Bearing Only - No Housing)	1
60mm Bar, 12" - 24" Bore Kit - 12mm Square Tooling	1
60mm Bar Full Set of Setup Cones (2.75 - 24")	1
30mm Bar x 2000mm bar, 10mm tooling, 150mm Spacing	1
30mm Bar, Full Set of Setup Cones (1.5"- 6")	1
30mm Collet Set. Feed, Drive, Tooling, Bearing x2	1
<b>IMPORTANT: CHOOSE YOUR DRIVE TYPE</b>	
Pneumatic	1
Electric	1
Hydraulic	1

## CONFIGURE YOUR OWN LINE BORING MACHINE

### 1 SELECT BASE UNIT

Each base unit includes 1 drive unit, 1 feed unit, tool heads (4 - 12"), tool kit, manual and steel box.



BASE UNIT	CODE
Metric Base Unit	MLB610-1
Imperial Base Unit	MLB610-2

See accessories section for adapter collets for smaller bar diameters.

### RECOMMENDED STEPS

1. Select base unit
2. Select boring bar
3. Select drive motor
4. Select motor control
5. Select leadscrew length
6. Select setup cones
7. Select mounting options
8. Select accessories

### 2 SELECT BORING BAR

Boring bars are chrome plated high tensile steel with full length keyway, supplied in a shipping crate.

Tooling is not included with each bar. Please choose what you need from the accessories section.

#### 60MM DIAMETER, 16MM TOOLING HOLES EVERY 150MM

	CODE
60mm x 1000mm bar, 150mm spacing	MLB610-3
60mm x 1500mm bar, 150mm spacing	MLB610-4
60mm x 2000mm bar, 150mm spacing	MLB610-5
60mm x 2500mm bar, 150mm spacing	MLB610-6
60mm x 3000mm bar, 150mm spacing	MLB610-7
60mm x 3500mm bar, 150mm spacing	MLB610-8

#### 60MM DIAMETER, 16MM TOOLING HOLES EVERY 250MM

	CODE
60mm x 1000mm bar, 250mm spacing	MLB610-9
60mm x 1500mm bar, 250mm spacing	MLB610-10
60mm x 2000mm bar, 250mm spacing	MLB610-11
60mm x 2500mm bar, 250mm spacing	MLB610-12
60mm x 3000mm bar, 250mm spacing	MLB610-13
60mm x 3500mm bar, 250mm spacing	MLB610-14

#### 2 1/4" DIAMETER, 16MM TOOLING HOLES EVERY 6"

	CODE
2 1/4" x 36" bar, 6" spacing	MLB610-15
2 1/4" x 48" bar, 6" spacing	MLB610-16
2 1/4" x 72" bar, 6" spacing	MLB610-17
2 1/4" x 96" bar, 6" spacing	MLB610-18
2 1/4" x 120" bar, 6" spacing	MLB610-19
2 1/4" x 144" bar, 6" spacing	MLB610-20

#### 2 1/4" DIAMETER, 16MM TOOLING HOLES EVERY 10"

	CODE
2 1/4" x 36" bar, 10" spacing	MLB610-21
2 1/4" x 48" bar, 10" spacing	MLB610-22
2 1/4" x 72" bar, 10" spacing	MLB610-23
2 1/4" x 96" bar, 10" spacing	MLB610-24
2 1/4" x 120" bar, 10" spacing	MLB610-25
2 1/4" x 144" bar, 10" spacing	MLB610-26

#### Ø 30MM BAR - 10MM TOOLING - HOLES EVERY 150MM

	CODE
1000mm bar length, 150mm Hole Spacing	MLB610-150
1500mm bar length, 150mm Hole Spacing	MLB610-151
2000mm bar length, 150mm Hole Spacing	MLB610-152
2500mm bar length, 150mm Hole Spacing	MLB610-153
3000mm bar length, 150mm Hole Spacing	MLB610-154
3500mm bar length, 150mm Hole Spacing	MLB610-155

#### Ø 30MM BAR - 10MM TOOLING - HOLES EVERY 250MM

	CODE
1000mm bar length, 250mm Hole Spacing	MLB610-156
1500mm bar length, 250mm Hole Spacing	MLB610-157
2000mm bar length, 250mm Hole Spacing	MLB610-158
2500mm bar length, 250mm Hole Spacing	MLB610-159
3000mm bar length, 250mm Hole Spacing	MLB610-160
3500mm bar length, 250mm Hole Spacing	MLB610-161

#### Ø 1 1/4" BAR - 10MM TOOLING - HOLES EVERY 6"

	CODE
36" bar length, 6" Hole Spacing	MLB610-162
48" bar length, 6" Hole Spacing	MLB610-163
72" bar length, 6" Hole Spacing	MLB610-164
96" bar length, 6" Hole Spacing	MLB610-165
120" bar length, 6" Hole Spacing	MLB610-166
144" bar length, 6" Hole Spacing	MLB610-167

#### Ø 1 1/4" BAR - 10MM TOOLING - HOLES EVERY 10"

	CODE
36" bar length, 10" Hole Spacing	MLB610-168
48" bar length, 10" Spacing	MLB610-169
72" bar length, 10" Spacing	MLB610-170
96" bar length, 10" Spacing	MLB610-171
120" bar length, 10" Spacing	MLB610-172
144" bar length, 10" Spacing	MLB610-173

#### Ø 1 3/4" BAR - 10MM TOOLING - HOLES EVERY 6"

	CODE
36" bar length, 6" Hole Spacing	MLB610-174
48" bar length, 6" Hole Spacing	MLB610-175
72" bar length, 6" Hole Spacing	MLB610-176
96" bar length, 6" Hole Spacing	MLB610-177
120" bar length, 6" Hole Spacing	MLB610-178
144" bar length, 6" Hole Spacing	MLB610-179

#### Ø 1 3/4" BAR - 10MM TOOLING - HOLES EVERY 10"

	CODE
36" bar length, 10" Hole Spacing	MLB610-180
48" bar length, 10" Hole Spacing	MLB610-181
72" bar length, 10" Hole Spacing	MLB610-182
96" bar length, 10" Hole Spacing	MLB610-183
120" bar length, 10" Hole Spacing	MLB610-184
144" bar length, 10" Hole Spacing	MLB610-185

### 3 SELECT DRIVE MOTOR OPTION

Drive motors fit to the rotational drive unit included in the base unit, they are reversible and final max bar rpm is quoted.



MOTOR OPTIONS	CODE
Pneumatic 2.2Hp / 1.7KW (166rpm)	<b>MLB610-30</b>
Pneumatic 4.0Hp / 3.0KW (60 rpm)	<b>MLB610-31</b>
Hydraulic 5.0HP / 3.7KW (100rpm)	<b>MLB610-32</b>
Hydraulic 5.0Hp / 3.7KW (32rpm)	<b>MLB610-33</b>
Electric 110v - 3.3HP / 2.5KW (8/160rpm)	<b>MLB610-34</b>
Electric 220V - 3.3HP / 2.5KW (8/160 rpm)	<b>MLB610-35</b>
Other motor variants available on request.	

### 6 SELECT SETUP CONES

Setup cones for metric and inch bars (sold in pairs).



60MM BORING BAR SETTING CONES	CODE
60mm Bar Small Setup Cones (2.75 - 8.37")	<b>MLB610-60</b>
60mm Bar Medium Setup Cones (8.37 - 12")	<b>MLB610-61</b>
60mm Bar Large Setup Cones (12 - 24")	<b>MLB610-62</b>
60mm Bar Full Set of Setup Cones (2.75 - 24")	<b>MLB610-63</b>
2 1/4" BORING BAR SETTING CONES	
2 1/4" Bar Small Setup Cones (2.75 - 8.37")	<b>MLB610-64</b>
2 1/4" Bar Medium Setup Cones (8.37 - 12")	<b>MLB610-65</b>
2 1/4" Bar Large Setup Cones (12 - 24")	<b>MLB610-66</b>
2 1/4" Bar Full Set of Setup Cones (2.75 - 24")	<b>MLB610-67</b>

### 4 SELECT DRIVE MOTOR CONTROL OPTION

All control options are built to suit the listed drive motors, (options available on request).



CONTROL OPTIONS	CODE
Pneumatic basic air caddy and e-stop	<b>MLB610-40</b>
Pneumatic full two button start. CE certified	<b>MLB610-41</b>
Hydraulic PP1 Electric HPU + control valves	<b>MLB610-42</b>
Hydraulic PP1 Diesel HPU + control valves	<b>MLB610-43</b>
Electric 110v control box	<b>MLB610-44</b>
Electric 220V control box	<b>MLB610-45</b>

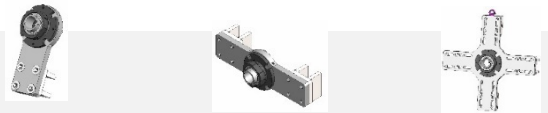
### 5 SELECT LEADSCREW

Select leadscrew to suit the stroke required.

LEADSCREW LENGTHS	CODE
305mm (12") stroke leadscrew	<b>MLB610-50</b>
610mm (24") stroke leadscrew	<b>MLB610-51</b>
915mm (36") stroke leadscrew	<b>MLB610-52</b>

### 7 SELECT MOUNTING OPTIONS

Mounting options to suit metric or imperial bars (supplied complete with bearing). Please note: 2 off typically required within standard set up.



60MM BORING BAR MOUNTING OPTIONS	CODE
Single arm Mount (1 Piece)	<b>MLB610-70</b>
Double arm Mount (1 Piece)	<b>MLB610-71</b>
Universal Mount (1 Piece)	<b>MLB610-72</b>
ID Mount (1 Piece)	<b>MLB610-73</b>
ID Face Adjusting Mount (1 Piece)	<b>MLB610-74</b>
Four Arm Mount (1 Piece)	<b>MLB610-75</b>
2 1/4" BORING BAR MOUNTING OPTIONS	
Single arm mount (1 Piece)	<b>MLB610-77</b>
Double arm mount (1 Piece)	<b>MLB610-78</b>
Universal mount (1 Piece)	<b>MLB610-79</b>
ID Mount (1 Piece)	<b>MLB610-80</b>
ID Face Adjusting Mount (1 Piece)	<b>MLB610-81</b>
Four Arm Mount (1 Piece)	<b>MLB610-82</b>

**8 SELECT ACCESSORIES**

**BORING BAR ADAPTER COLLETS**

Enables the same drive, feed, mounting and accessories to be used on different bar diameters.



<b>COLLETS – MOUNTING BEARINGS</b> (Typically 2 off required).	<b>CODE</b>
60mm - 30mm Boring Bar Sleeve	<b>MLB610-100</b>
60mm - 1 3/4" Boring Bar Sleeve	<b>MLB610-101</b>
60mm - 1 1/4" Boring Bar Sleeve	<b>MLB610-102</b>
2 1/4" - 1 3/4" Boring Bar Sleeve	<b>MLB610-103</b>
2 1/4" - 1 1/4" Boring Bar Sleeve	<b>MLB610-104</b>
2 1/4" - 30mm Boring Bar Sleeve	<b>MLB610-105</b>
<b>COLLETS - FEED UNIT</b>	
Feed Unit Collet with Key for 60mm Diameter Bar	<b>MLB610-106</b>
Feed Unit Collet with Key for 30mm Diameter Bar	<b>MLB610-107</b>
Feed Unit Collet with Key for 2 -1/4" Diameter Bar	<b>MLB610-108</b>
Feed Unit Collet with Key for 1 -3/4" Diameter Bar	<b>MLB610-109</b>
Feed Unit Collet with Key for 1 -1/4" Diameter Bar	<b>MLB610-110</b>
<b>COLLETS - DRIVE UNIT</b>	
Drive Unit Collet with Key for 60mm Diameter Bar	<b>MLB610-111</b>
Drive Unit Collet with Key for 30mm Diameter Bar	<b>MLB610-112</b>
Drive Unit Collet with Key for 2-1/4" Diameter Bar	<b>MLB610-113</b>
Drive Unit Collet with Key for 1-3/4" Diameter Bar	<b>MLB610-114</b>
Drive Unit Collet with Key for 1-1/4" Diameter Bar	<b>MLB610-115</b>
<b>COLLETS - TOOLING</b>	
60mm Tooling to Boring Bar Sleeve	<b>MLB610-116</b>
30mm Tooling to Boring Bar Sleeve	<b>MLB610-117</b>
2 1/4" Tooling to Boring Bar Sleeve	<b>MLB610-118</b>
1 3/4" Tooling to Boring Bar Sleeve	<b>MLB610-119</b>
1 1/4" Tooling to Boring Bar Sleeve	<b>MLB610-120</b>
<b>COLLETS – COMPLETE SETS</b>	
60mm Collet Set. Feed, Drive, Tooling	<b>MLB610-121</b>
30mm Collet Set. Feed, Drive, Tooling, Bearing x2	<b>MLB610-122</b>
2 1/4" Collet Set. Feed, Drive, Tooling	<b>MLB610-123</b>
1 3/4" Collet Set. Feed, Drive, Tooling, Bearing x2	<b>MLB610-124</b>
1 1/4" Collet Set. Feed, Drive, Tooling, Bearing x2	<b>MLB610-125</b>

**MOUNTING BEARINGS**

Bearings and Bearing Housings are sold separately.



<b>MOUNTING BEARINGS</b>	<b>CODE</b>
Mounting Bearing Housing. (Housing only, excludes Bearing).	<b>MLB610-130</b>
60mm Self-aligning Mounting Bearing. (Bearing only, excludes Housing).	<b>MLB610-131</b>
2 1/4" Self-aligning Mounting Bearing (Bearing only, Excludes Housing).	<b>MLB610-132</b>

**TOOLING HEADS**

Tooling heads are sold with left-hand tools and 10 inserts for general steel / stainless steel use, (others available on request).



<b>60MM TOOLING HEADS</b>	<b>CODE</b>
60mm Bar, 4"-12" Bore Kit 16mm Tooling	<b>MLB610-140</b>
60mm Bar, 12"- 24" Bore Kit 12mm Square Tooling	<b>MLB610-141</b>
<b>2 1/4" TOOLING HEADS</b>	
2 1/4" Bar, 4"-12" Bore Kit 16mm Tooling	<b>MLB610-142</b>
2 1/4" Bar, 12"- 24" Bore Kit 12mm Square Tooling	<b>MLB610-143</b>
<b>30MM TOOLING HEADS</b>	
30mm Bar, 1 1/2" – 4 1/2" Tooling Heads, 10mm Tooling	<b>MLB610-144</b>

**MICRO BORE KIT**

Designed to fit directly to the bar or into standard tooling adapters.

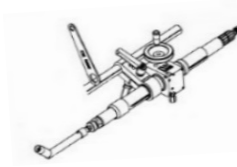


<b>MICRO BORE KIT</b>	<b>CODE</b>
Metric Micro Bore Tooling - 60mm bar - 3 tools	<b>MLB610-146</b>

## 8 SELECT ACCESSORIES (CONTINUED)

### BORE WELDERS

MLB interface bore welding systems 1-30" Ø



BORE WELDERS - METRIC BAR 60MM	CODE
60mm Bar Small Diameter Bore Welder (1 - 14")	<b>MLB610-250</b>
60mm Bar Large Diameter Bore Welder (1 - 30")	<b>MLB610-251</b>
BORE WELDERS - ADAPTOR KITS	
60mm Boring Bar Welder Mounting Bracket Adaptor (1-30")	<b>MLB610-252</b>
2 1/4" Boring Bar Welder Mounting Bracket Adaptor (1-30") & Collet Set	<b>MLB610-253</b>

### TOOLING

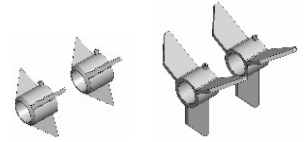
Tool Holders for metric and inch boring bars and boring kits.



TOOLING - 16MM (FOR 4 -12" TOOLING HEADS)	CODE
16mm inserted tool holder - (For 4 - 6" Tooling Head Kit)	<b>MLB610-300</b>
16mm inserted tool holder - (For 6 - 8" Tooling Head Kit)	<b>MLB610-301</b>
16mm inserted tool holder - (For 8 - 12" Tooling Head Kit)	<b>MLB610-302</b>
TOOLING - 12MM (FOR 12 -24" TOOLING HEADS)	
12mm inserted tool holder (for 12 -24" Tooling Head Kit)	<b>MLB610-303</b>
TOOLING - 10MM (FOR 1.5 - 4" TOOLING HEADS)	
10mm inserted tool holder - 25mm (For 1.5" - 4" Tooling Head Kit)	<b>MLB610-308</b>
10mm inserted tool holder - 45mm (For 1.5" - 4" Tooling Head Kit)	<b>MLB610-309</b>
10mm inserted tool holder - 65mm (For 1.5" - 4" Tooling Head Kit)	<b>MLB610-310</b>
TOOLING - 16MM (FOR 4 - 12" TOOLING HEADS - REDUCES DIAMETER TO 2.5")	
16mm inserted tool holder + adjusting screw (For 4 - 12" Tooling Head Kit - reduces diameter to 2.5")	<b>MLB610-314</b>

### SET UP CONES

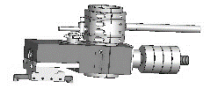
All setup cones for metric and inch bars (sold in pairs).



Ø 30MM BORING BAR SETTING CONES	CODE
30mm Bar, Small Setup Cones (1.5 - 3.5")	<b>MLB610-192</b>
30mm Bar, Medium Setup Cones (3.5 - 6")	<b>MLB610-193</b>
30mm Bar, Full Set of Setup Cones (1.5 - 6")	<b>MLB610-194</b>
Ø 1 1/4" BORING BAR SETTING CONES	
1 1/4" Bar, Small Setup Cones (1.5 - 3.5")	<b>MLB610-195</b>
1 1/4" Bar, Medium Setup Cones (3.5 - 6")	<b>MLB610-196</b>
1 1/4" Bar, Full Set of Setup Cones (1.5 - 6")	<b>MLB610-197</b>

### FACING HEADS

All facing heads supplied with trip and counterbalance.



FACING HEADS - METRIC BAR 60MM	CODE
Small Diameter Facing Head (1 1/2" - 15 1/2")	<b>MLB610-200</b>
Medium Diameter Facing Head (1 1/4" - 20")	<b>MLB610-201</b>
Large Diameter Facing Head (1 1/4" - 32")	<b>MLB610-202</b>



### SMALL BORE KITS

	CODE
60 - 30mm Bar Set. Drive, Feed & Bearing Collets. Set Up Cones & Tooling.	<b>MLB610-190</b>
2 1/4" - 1 1/4" Bar Set. Drive, Feed & Bearing Collets. Set Up Cones & Tooling.	<b>MLB610-191</b>

## 8 SELECT ACCESSORIES (CONTINUED)

### TOOLING INSERTS

Tooling Inserts for metric and inch boring bars and boring kits.

<b>TOOLING INSERTS</b>	
Carbide Inserts for 16mm tooling (General grade steel / stainless steels)	<b>MLB610-316</b>
Carbide Inserts for 12mm tooling (General grade steel / stainless steels)	<b>MLB610-317</b>
Carbide Inserts for 10mm tooling (General grade steel / stainless steels)	<b>MLB610-318</b>
Carbide Inserts for Microbore tooling (General grade steel / stainless steels)	<b>MLB610-316</b>
<b>DRILLING ACCESSORIES</b>	
Drill stand and front support bearing -( requires single arm support to mount Drive unit)	<b>MLB610-330</b>
60mm bar, 5MT / 1/2" parallel bore - for 12" stroke	<b>MLB610-331</b>
60mm bar, 5MT / 1/2" parallel bore - for 24" stroke	<b>MLB610-332</b>
60mm bar, 5MT / 1/2" parallel bore - for 36" stroke	<b>MLB610-333</b>
Drill Morse Taper sleeve set (5-4, 4-3, 3-2)	<b>MLB610-334</b>
<b>MAGNETIC DIAL INDICATOR</b>	
50mm magnetic back plunge type dial test indicator	<b>MLB610-340</b>
Bar Mounting (16mm) magnetic back dial test indicator holder	<b>MLB610-341</b>
<b>BORE MEASURING</b>	
12" max diameter electronic digital caliper	<b>MLB610-342</b>
24" max diameter electronic digital caliper	<b>MLB610-343</b>
Manual Bore Measuring to 12"	<b>MLB610-344</b>
Digital Bore Measuring to 24"	<b>MLB610-345</b>

## SET UP AND OPERATION

Please operate within machine manual guidelines regarding set up, operation, safety and maintenance.