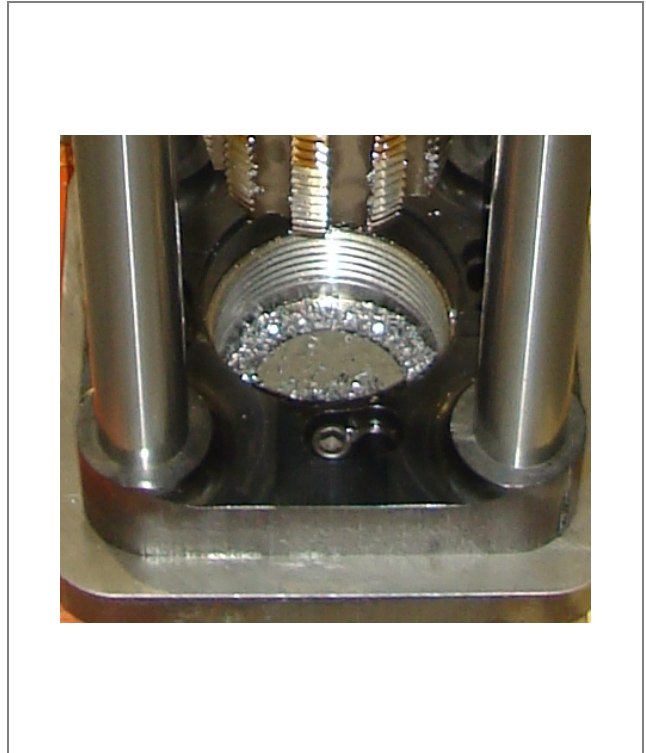


12" stroke -  $\varnothing$  3" capacity

Rev 1.0



- **Hardened and ground guide rods to maintain robust, accurate operation**
- **Quick key hole mounting**
- **High torque multiplication drive**

A portable, lightweight, heavy duty tapping machine for all general purpose on site tapping and flange stud tapping.

The machine is supplied complete with toolkit including:

- Hose connection
- Motor & couplings
- All required mounting base bolts (M10)
- Storage / shipping box
- CE certificate
- Packing list and manual

### Technical Details

|  |          |            |
|--|----------|------------|
| Maximum Tapping (without nose bush)      | 76mm     | 3"         |
| Maximum Diameter (through nose bush)     | 70mm     | 2.75"      |
| Location Diameter (nose bush)            | 80mm     | 3.15"      |
| Clamping Holes 3 off 10.5 thro' - PCD    | 115mm    | 4.53"      |
| Standard Stroke                          | 305mm    | 12"        |
| R.P.M                                    | Min: 1   | Max: 11    |
| Drive - Hydraulic @ 70 bar ( 1050 p.s.i) | 3.7 Kw   | 5.0 Hp     |
| Hydraulic Supply Required                | 40 L/min | 10 Gal/min |

### Weights and Dimensions

|                 |        |         |
|-----------------|--------|---------|
| Machine Weight  | 53 Kgs | 117 Lbs |
| Shipping Weight | 67 Kgs | 147 Lbs |

### Shipping Dimensions

| Length |        | Width |        | Height |        |
|--------|--------|-------|--------|--------|--------|
| mm     | inches | mm    | inches | mm     | inches |
| 870    | 34     | 370   | 15     | 400    | 16     |

