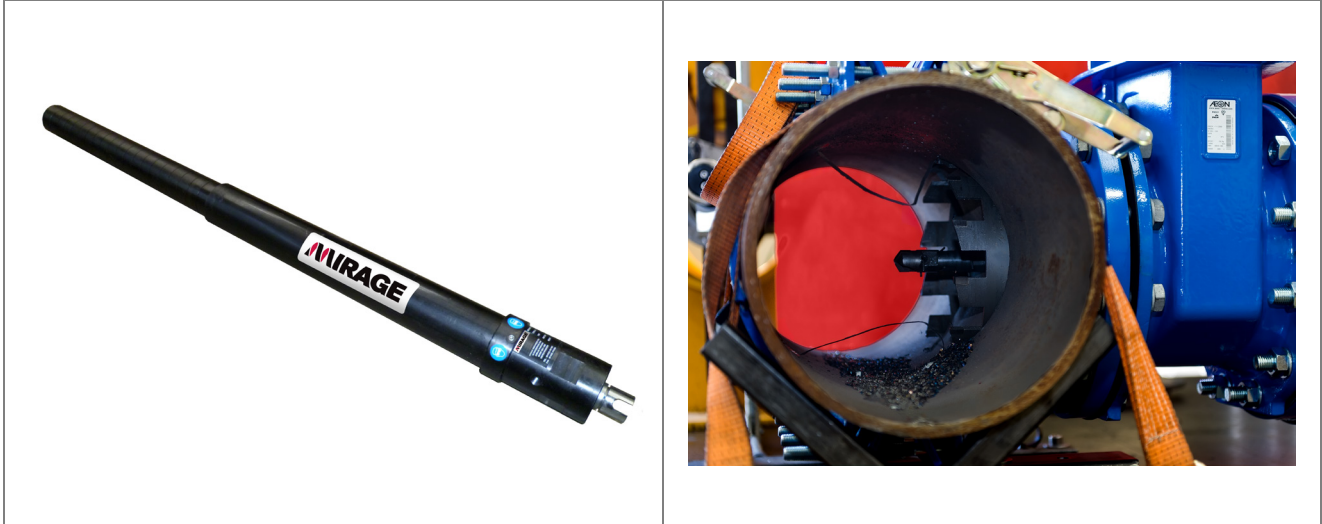


32" stroke -  $\varnothing$ 1/2 - 6" capacity



- **Manual rotation & feed**
- **2" NPT connection**
- **Lightweight construction**
- **Pressure 102 bar (1480 psi)**

Part of our HTM machine range, with a maximum working pressure capacity of 1480 p.s.i it can hot tap from  $\varnothing$ 1/2 - 6". Specifically designed for the water, gas and petrochemical industries.

The HTM150XL machine is supplied complete with:

- Toolkit
- Air filter lubricator (when required) and hose connection
- All required hole saw adapters and drive plates
- Storage / shipping box
- CE certificate
- Packing list and manual

Alternatively, you can purchase the complete HTM150XL SET which also includes additional tooling with the machine (see page 3).

## Technical Details

Minimum Tapping Hole Diameter	12mm	1/2"
Maximum Tapping Hole Diameter	152mm	6"
Maximum Working Pressure	102 bar	1480 p.s.i
Maximum Operating Temperature	200°C	392°F
Spindle Bar Travel	813mm	32"
R.P.M (when motor driven)	0	200
Drive - Pneumatic (weight + 4 Kgs)	0.9 Hp	0.67Kw
Air Supply Required @ 90 p.s.i	42 s.c.f.m	1.19 m3/m

## Feed Rates

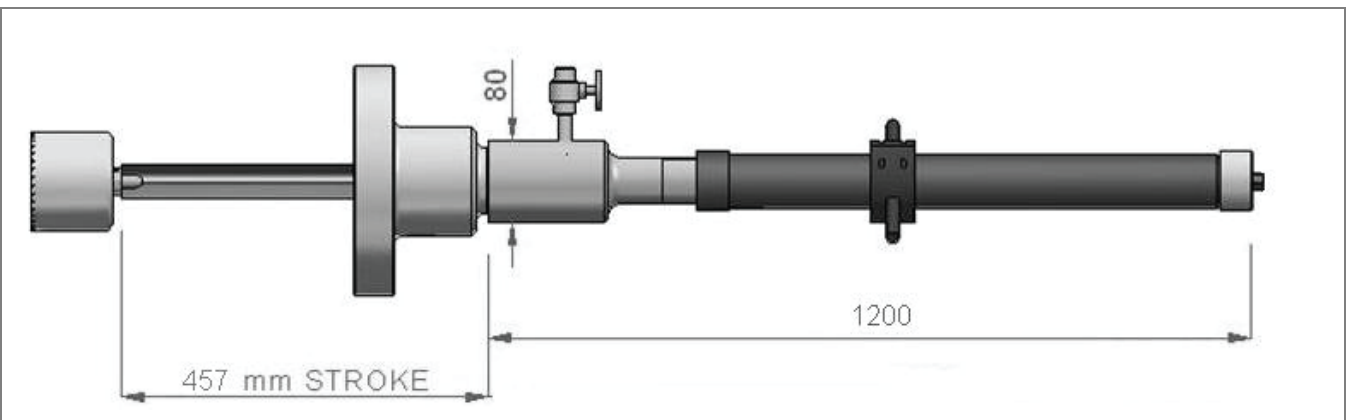
Feed Rate - Manual / Revolution	3.0mm	0.118"
---------------------------------	-------	--------

## Weights and Dimensions

Machine Weight	32 Kgs	70 Lbs
Shipping Weight	68 Kgs	150 Lbs







## Shipping Dimensions

Length		Width		Height	
mm	inches	mm	inches	mm	inches
2200	86	420	17	330	13



## Optional Accessories

Complete set for 1/2 - 6" #150 and #300 Hot Taps

Accessory	Part number	Description	Quantity
	HTM150XL	(1/2" - 6") HOT TAP MACHINE	1
	HTM1504	18" STROKE SHORT DRILL SHAFT	1
<b>Flange adapters</b>			
	TA2-2	2" NPT THREADED ADAPTER	2
	FA2#150	2" #150 FLANGE ADAPTER	1
	FA3#150	3" #150 FLANGE ADAPTER	1
	FA4#150	4" #150 FLANGE ADAPTER	1
	FA6#150	6" #150 FLANGE ADAPTER	1
	FA2#300	2" #300 FLANGE ADAPTER	1
	FA3#300	3" #300 FLANGE ADAPTER	1
	FA4#300	4" #300 FLANGE ADAPTER	1
	FA6#300	6" #300 FLANGE ADAPTER	1
<b>Standard drills</b>			
	HTMD1/2	1/2" STANDARD DRILL	1
	HTMD1	1" STANDARD DRILL	1
	HTMD11/4	1-1/4" STANDARD DRILL	1
	HTMD11/2	1-1/2" STANDARD DRILL	1
<b>Hole saw tooling</b>			
	HTMHSP2	2-3" HOLE SAW HOLDER & PILOT DRILL	1
	HTMHSP3	3-6" HOLE SAW HOLDER & PILOT DRILL	1
<b>Hole saw cutters</b>			
	HTMHS2	2" HOT TAP HOLE SAW	1
	HTMHS3	3" HOT TAP HOLE SAW	1
	HTMHS4	4" HOT TAP HOLE SAW	1
	HTMHS6	6" HOT TAP HOLE SAW	1